

Portland Barnstormers RC Flying Club
Field Guidelines



Table of Contents

FIELD GUIDELINES.....	1
1. DEFINITIONS.....	2
1.1 Club Member.....	2
1.2 Model Aircraft.....	2
1.3 Pilot Flying.....	2
1.4 Pilot Not Flying.....	2
1.5 Spotter.....	2
2. AIRFIELD OVERVIEW.....	3
2.1 Airfield Features.....	3
2.2 Access and Parking.....	4
3. MEMBERSHIP AND PILOT REQUIREMENTS.....	4
3.1 AMA Membership.....	4
3.2 Introductory Flights.....	5
3.3 Pilot Readiness.....	5
4. FIELD SAFETY AND CONDUCT.....	5
4.1 Emergencies.....	5
4.2 Prohibited Activities.....	5
5. FLIGHT OPERATIONS.....	5
5.1 General Rules.....	5
5.2 Aircraft Limits.....	5
5.3 Flight Patterns.....	6
5.4 Rotorcraft Operations.....	6
6. COMMUNICATIONS.....	7
7. TAKEOFFS AND LANDINGS.....	7
8. FPV OPERATIONS.....	7
9. CRASHES AND RECOVERY.....	7
9.1 Battery Fire Prevention.....	7
9.2 On-Field Recovery.....	7
9.3 Off-Field Recovery.....	7
END OF DOCUMENT.....	7

Portland Barnstormers RC Flying Club

Field Guidelines

1. Definitions

- Capitalized terms in this document use the following definitions.

1.1 Club Member

- An individual who has paid annual dues and has been accepted as a member of the Portland Barnstormers.

1.2 Model Aircraft

1.2.1 AMA Definition

- A non-human-carrying aircraft capable of sustained flight within visual line of sight of the pilot or spotter, flown for recreation, education, or competition, and operated in accordance with AMA safety guidelines and applicable laws.

1.2.2 FAA Definition (Summary)

- A model aircraft is an unmanned aircraft flown for hobby or recreational purposes, within visual line of sight, under a community-based safety program (AMA), weighing 55 lbs or less (restricted to 35 lbs by Barnstormers' lease), yielding to manned aircraft, and complying with airport proximity notification requirements.
- Nearest Airport: Aurora State Airport (UAO), approximately 3.5 miles from the field.

1.3 Pilot Flying

- A Club Member or supervised guest actively operating an aircraft, whether the aircraft is airborne or on the ground.

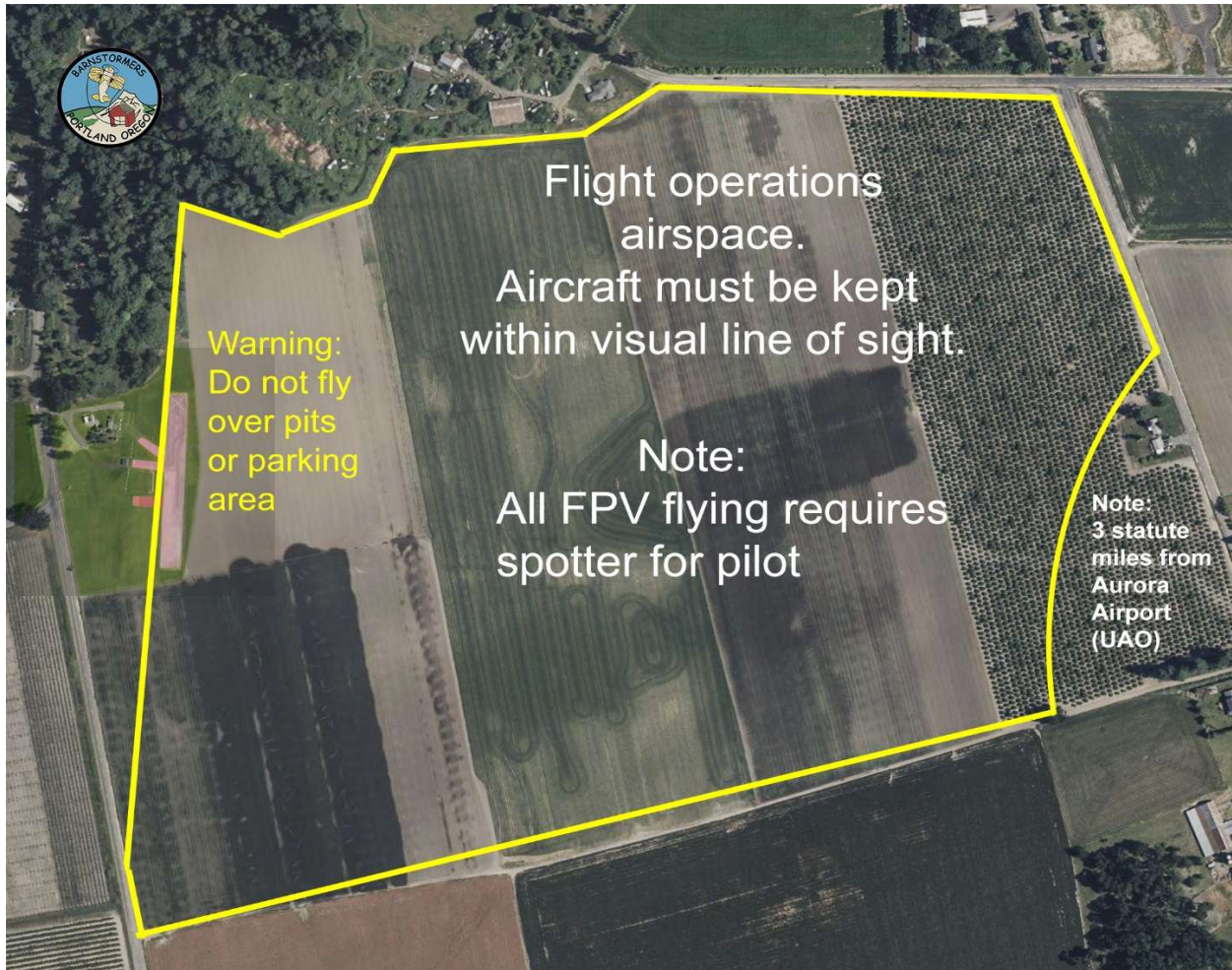
1.4 Pilot Not Flying

- A Club Member present at the field who is not currently operating an aircraft.

1.5 Spotter

- An individual assisting a Pilot Flying in maintaining situational awareness and compliance with FAA "see and avoid" requirements.

Portland Barnstormers RC Flying Club Field Guidelines



2.2 Access and Parking

- First arriving member unlocks gate and scrambles lock combination.
- Last departing member locks gate and scrambles combination.
- Spectators are welcome and should be guided to safe parking locations.

3. Membership and Pilot Requirements

3.1 AMA Membership

- All pilots must maintain current AMA membership, complete FAA TRUST training, and register with the FAA as required.
- Aircraft must display: - FAA registration number - AMA number - Pilot name and contact information

Portland Barnstormers RC Flying Club

Field Guidelines

3.2 Introductory Flights

- Introductory flights are permitted under the AMA Introductory Pilot Program and must be supervised by a registered instructor.

3.3 Pilot Readiness

- Pilots must not fly while impaired by illness, medication, alcohol, or drugs.

4. Field Safety and Conduct

4.1 Emergencies

- Emergency information is posted at the shelter and field board.
- First aid kit: under the middle stationary table (north pit area)
- Fire extinguishers: flight box, shelter post, red shed, north pit table
- Water jugs: located at pilot stations; must be filled daily
- Call 911 immediately if a fire cannot be controlled.

4.2 Prohibited Activities

- Turbine jet aircraft
- Aircraft over 35 lbs
- Fireworks
- Alcohol or drug use
- Smoking in pits or during high fire risk
- Unsupervised children
- Unleashed pets
- Camping (unless specifically approved)

5. Flight Operations

5.1 General Rules

- Comply with AMA Safety Code and “See and Avoid” guidance
- Yield immediately to manned aircraft
- Stay within designated airspace

5.2 Aircraft Limits

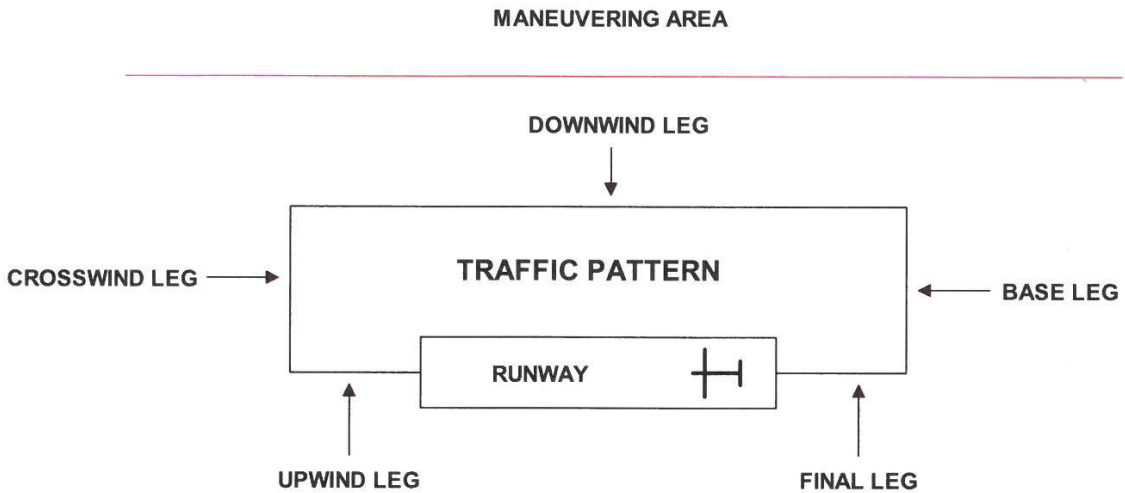
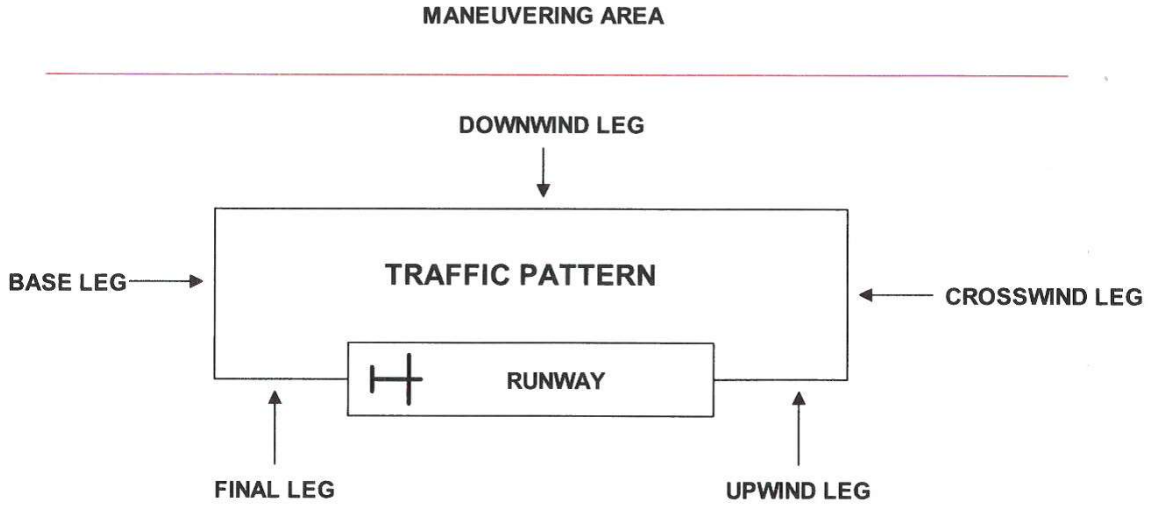
- Maximum aircraft aloft: five
- Maximum altitude: 400 ft AGL

5.3 Flight Patterns

- Pattern direction established by first pilot flying
- Maintain situational awareness and spacing

Portland Barnstormers RC Flying Club Field Guidelines

- Aerobatics conducted east of the runway unless all pilots agree



5.4 Rotorcraft Operations

- Dedicated airspace at the South East side of the field
- No fixed-wing aircraft airborne during rotor-craft operations
- No pit or taxiway operations

6. Communications

- Only pilots at pilot stations communicate with other pilots

Portland Barnstormers RC Flying Club Field Guidelines

- Use clear calls: “taking off,” “landing,” “clear,” “going around,” etc.
- Always specify left-to-right, right-to-left, or straight out

7. Takeoffs and Landings

- No takeoffs or landings with people on the runway
- Declare intentions loudly and wait for acknowledgment
- Dead-stick and emergency aircraft have priority

8. FPV Operations

- FPV flight is permitted with:
- Experienced pilot
- Visual observer beside the pilot
- Compliance with AMA FPV guidance
- Operations below 400 ft AGL

9. Crashes and Recovery

9.1 Battery Fire Prevention

- Damaged LiPo or Li-Ion batteries must be recovered immediately.

9.2 On-Field Recovery

- Follow runway entry procedures and mark crash sites if needed.

9.3 Off-Field Recovery

- Obtain landowner permission
- Minimize crop damage
- Use established paths where possible

End of Document